

2011 ETS Assessment Data



NEWBERRY
COLLEGE

What is the ETS Profile Proficiency?

- Allows you to gain a full perspective of the **effectiveness** of your general education program;
- Allows you to **pinpoint strengths** and **areas of improvement** in teaching & learning;
- provides **comparative data** on more than 400 institutions and over 500,000 students nationwide;
- **Measures proficiency** in critical thinking, reading, writing and mathematics in the context of humanities, social sciences and natural sciences;
- **Measures academic skills *developed***, as opposed to subject knowledge *taught*, in general education c



NEWBERRY
COLLEGE

ETS Comparative Data Demographics

- Comparative Data comes from 2006 - 2010;
- 77 participating Baccalaureate Liberal Arts institutions including 6 SC institutions (see Addendum);
- Over 20,000 Senior (more than 90 semester hours) students have taken this ETS Profile Proficiency;
- Basic Demographics:
 - Age: 20-29 = 82%; 30-39 = 10%; 40-49 = 5%; 50-59 = 2%
 - Gender: Male 36%; Female 64%
 - Ethnicity: White 73%; African American 14%; Hispanic 4%; Latin 1% ; Asian 3%; American/ Alaskan Indian 1%
- Languages: English 91%; Other 6%; Multi (including English) 3%



NEWBERRY
COLLEGE

ETS Comparative Academic Data

Cumulative GPA:

<u>ETS Norm</u>	<u>Newberry</u>
• 3.50 – 4.00 36%	NC=34%
• 3.00 – 3.49 36%	NC=32%
• 2.50 – 2.99 21%	NC=27%
• 2.00 – 2.49 6%	NC=7%
• 1.00 – 1.99 <1%	NC= 0%
• Less than 1.00 <1%	NC= 0%

Enrollment Status:

Full-Time 91%	NC=96.7%
Part-Time 9%	NC=3.3%

Credit HRS Transferred

Not a transfer	56%
0-15 hrs. transferred	8%
16-30 hrs transferred	9%
>30 hrs transferred	27%



NEWBERRY
COLLEGE

Mean Total Score: National vs. NC

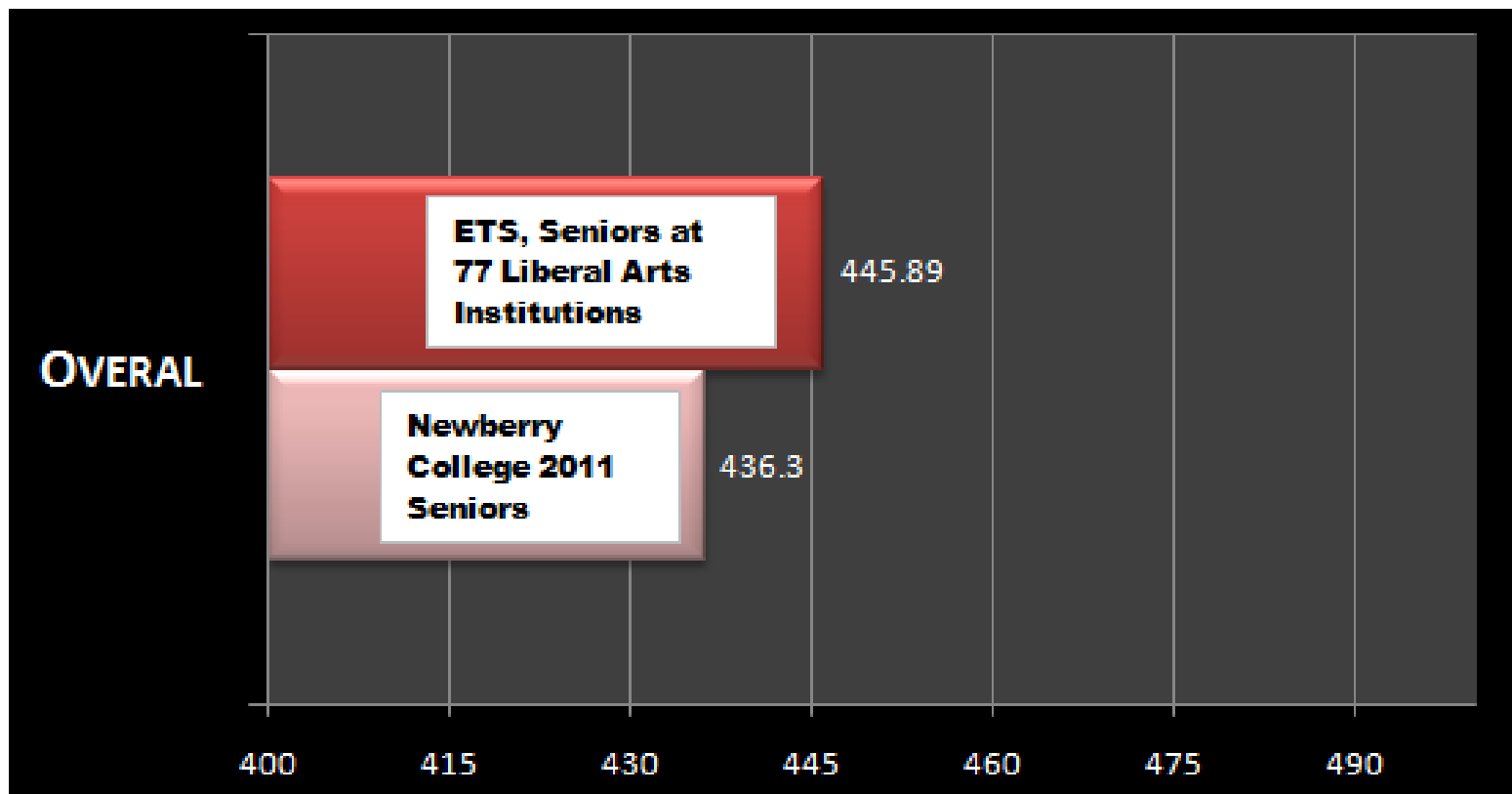
Break out areas: Score Range is 400-500

77 Institutions, Seniors, Liberal Arts

Mean total Score of ETS Profile Proficiency
445.89

Newberry College, 2011 Seniors

Mean total Score of ETS Profile Proficiency
436.30



ETS Comparative Data Scores



NEWBERRY
COLLEGE

Break out areas: Score Range is 100-130

77 Institutions, Seniors, Liberal Arts

- Mean Total Score of ETS Profile Proficiency (400-500)

• **445.89**

- Critical Thinking - 112.79
 - Reading - 118.60
 - Writing - 114.53
 - Math - 113.33

- Humanities - 115.49
- Social Sciences – 114.28
- Natural Science – 115.72

Newberry College, 2011 Seniors

- Mean Total Score of ETS Profile Proficiency (400-500)

• **436.30**

- Critical Thinking - 109.38
 - Reading - 114.66
 - Writing - 113.34
 - Math - 111.18

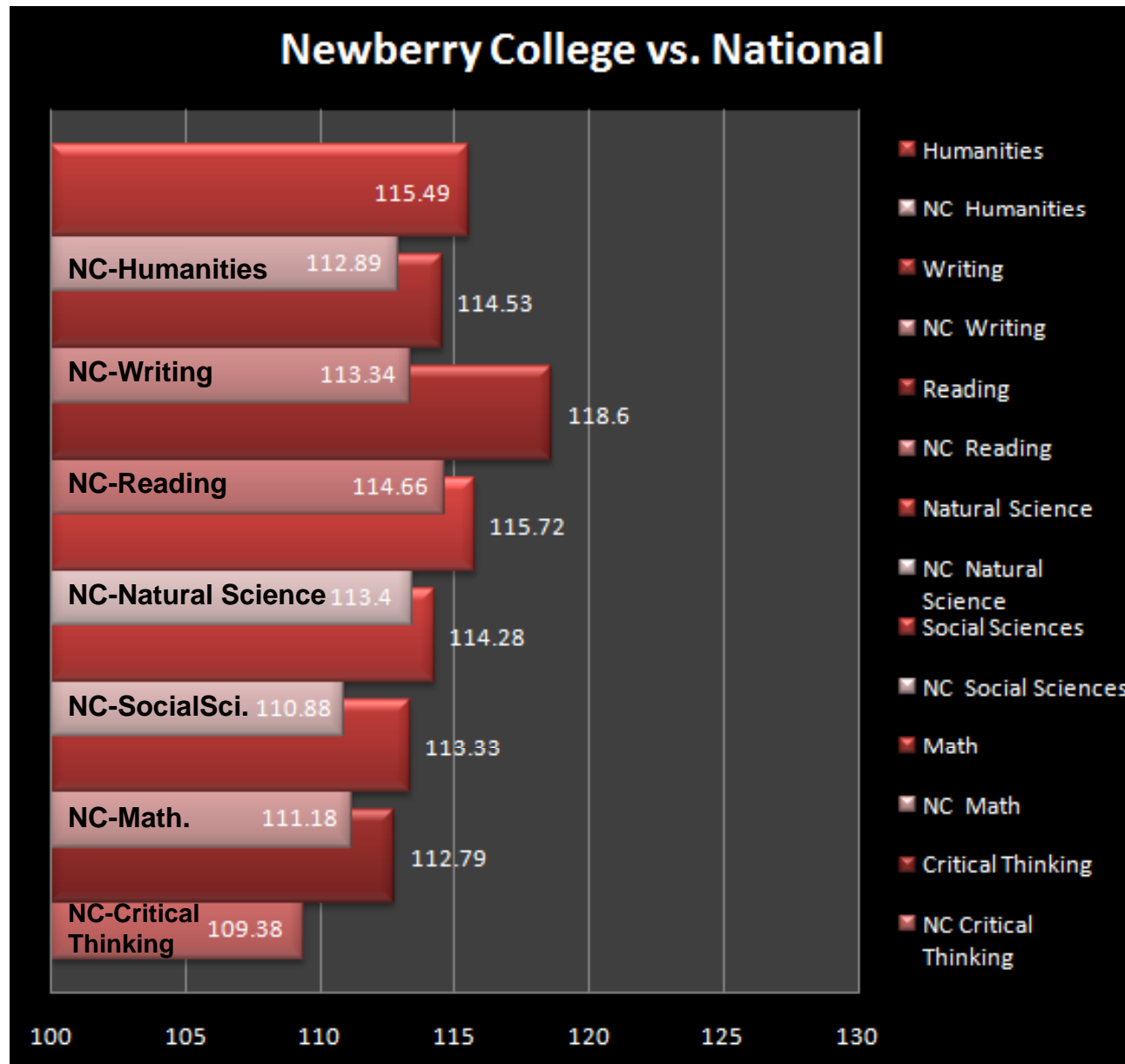
- Humanities - 112.89
- Social Sciences – 110.88
- Natural Science – 113.4

Norm-referenced scores (scaled scores) compare the scores of one student or group of students to another, or the same student or group at different points in time.

The ETS Proficiency Profile offers **eight** norm-referenced scores:

1. Total Score
2. Skills subscores (Critical Thinking, Reading, Writing, Math)
3. Context subscores (Humanities, Social Sciences, Natural Sciences)

National vs. NC Breakout Area



- Assess student proficiency in core academic skill areas to identify strengths, weaknesses and opportunities to improve curriculum.
- Compare student performance against the performance of their student peers;
- Measure and document program effectiveness to meet requirements for accreditation and program funding.

ETS Comparative Data Scores

77 Institutions, Seniors, Liberal Arts

Skill Dimension	Proficiency Classification		
	Proficient	Marginal	Not Proficient
Reading, Level 1	70%	17%	13%
Reading, Level 2	42%	19%	39%
Critical Thinking/ L3	9%	20%	71%
Writing, Level 1	66%	24%	10%
Writing, Level 2	23%	36%	41%
Writing, Level 3	10%	29%	62%
Mathematics, Level 1	57%	23%	20%
Mathematics, Level 2	31%	25%	44%
Mathematics, Level 3	9%	17%	74%

Newberry College, 2011 Seniors

Skill Dimension	Proficiency Classification		
	Proficient	Marginal	Not Proficient
Reading, Level 1	46%	24%	30%
Reading, Level 2	17%	18%	65%
Critical Thinking/ L3	2%	11%	87%
Writing, Level 1	62%	25%	13%
Writing, Level 2	12%	41%	47%
Writing, Level 3	3%	19%	78%
Mathematics, Level 1	35%	26%	39%
Mathematics, Level 2	17%	27%	56%
Mathematics, Level 3	4%	8%	88%

Criterion-referenced scores
(proficiency classifications) measure the level of proficiency obtained on a certain skill set.



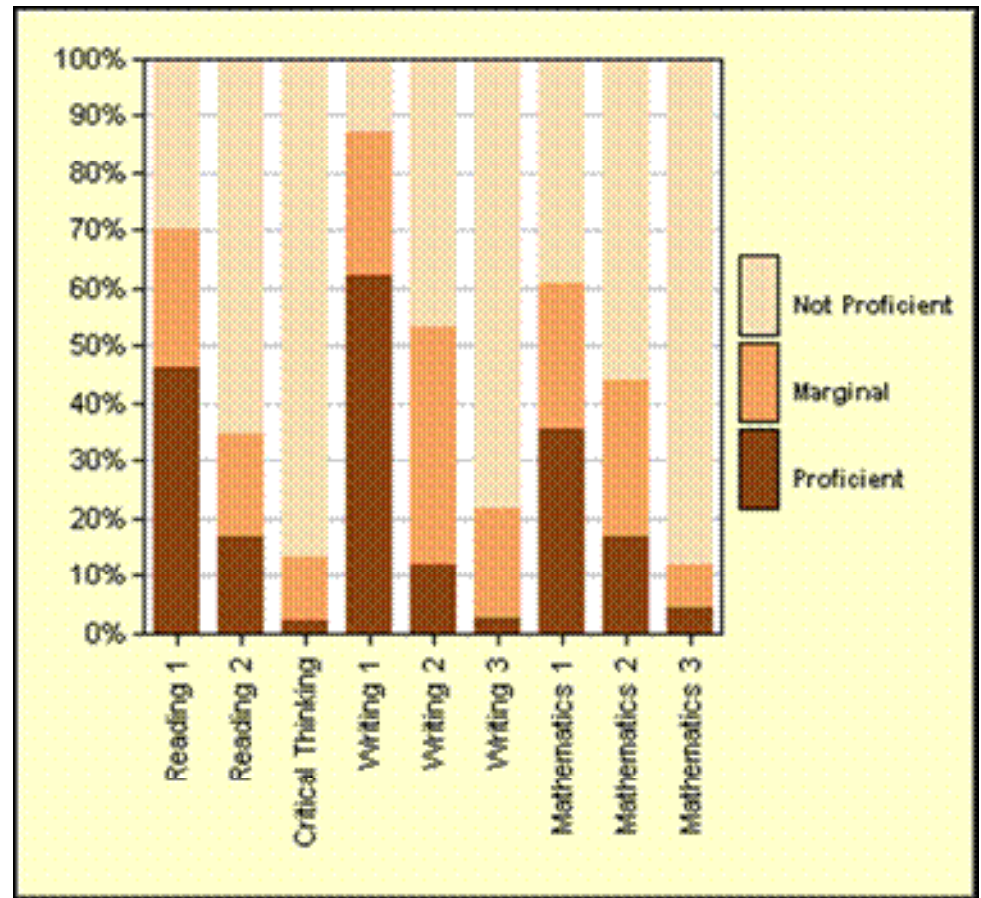
NEWBERRY
COLLEGE

Scores can be used for curriculum improvement and individual student progress.

What we have learned...

Newberry College 2011 Graduating Seniors are:

- 46% are Proficient at Level 1 Reading
 - 54% are NOT Proficient
- 17% are Proficient at Level 2 Reading
 - 83% are NOT proficient
- 2% are Proficient at Level 3/Critical Thinking
 - 98% are NOT proficient
- 62% are Proficient at Level 1 Writing
 - 38% are NOT proficient
- 12% are Proficient at Level 2 Writing
 - 88% are NOT proficient
- 3% are Proficient at Level 3 Writing
 - 97% are NOT proficient
- 35% are Proficient at Level 1 Math
 - 65% are NOT proficient
- 17% are Proficient at Level 2 Math
 - 83% are NOT proficient
- 4% are Proficient at Level 3 Math
 - 96% are NOT proficient



NEWBERRY
COLLEGE

Addendum: Participating Institutions

77 participating Baccalaureate Liberal Arts institutions including 6 SC institutions;

ALBERTUS MAGNUS COLLEGE, CT
ANTIOCH UNIVERSITY, OH
ASBURY COLLEGE, KY
ATLANTA CHRISTIAN COLLEGE, GA
BELHAVEN COLLEGE, MS
BLUE MOUNTAIN COLLEGE, MS
BREWTON-PARKER COLLEGE, GA
CAZENOVIA COLLEGE, NY
CHOWAN UNIVERSITY, NC
CLAFLIN UNIVERSITY, SC
CLAYTON STATE UNIVERSITY, GA
COASTAL CAROLINA UNIV, SC
COLORADO STATE UNIV- CO
CONCORDIA COLLEGE, MN
COVENANT COLLEGE, GA
DENISON UNIVERSITY, OH
DICKINSON STATE UNIVERSITY, ND
DORDT COLLEGE, IA
EASTERN MENNONITE UNIV, VA
ECKERD COLLEGE, FL
EMMANUEL COLLEGE, GA

ENDICOTT COLLEGE, MA
EVERGLADES UNIVERSITY - FL
FISHER COLLEGE, MA
FISK UNIVERSITY, TN
FLAGLER COLLEGE, FL
FLORIDA SOUTHERN COLLEGE, FL
GEORGETOWN COLLEGE, KY
GRAND VIEW UNIVERSITY, IA
HESSER COLLEGE, NH
HIGH POINT UNIVERSITY, NC
HOWARD PAYNE UNIVERSITY, TX
JAMESTOWN COLLEGE, ND
LAGRANGE COLLEGE, GA
LAMBUTH UNIVERSITY, TN
LANDER UNIVERSITY, SC
LANE COLLEGE, TN
LENOIR-RHYNE COLLEGE, NC
LEWIS-CLARK STATE COLLEGE, ID
LIMESTONE COLLEGE - SC
MARANATHA BAPTIST BIBLE
COLLEGE, WI

MARIETTA COLLEGE, OH
METROPOLITAN STATE COL., CO
MIDWAY COLLEGE, KY
MO. SOUTHERN STATE UNIV, MO
MISSOURI VALLEY COLLEGE, MO
MO. WESTERN STATE UNIV, MO
MT. VERNON NAZARENE UNIV, OH
N.C.WESLEYAN COLLEGE, NC
NORTH GREENVILLE UNIV, SC
OHIO CHRISTIAN UNIVERSITY, OH
OKLAHOMA BAPTIST UNIV, OK
PACIFIC UNION COLLEGE, CA
PHILANDER SMITH COLLEGE, AR
PIKEVILLE COLLEGE, KY
REINHARDT COLLEGE, GA
ROBERT B. MILLER COLLEGE, MI
SAINT MARY-OF-THE-WOODS
COLLEGE, IN
SAN DIEGO CHRISTIAN COL, CA
CHREINER UNIVERSITY, TX
SHAWNEE STATE UNIVERSITY, OH

SHORTER COLLEGE, GA
SOUTHERN ADVENTIST UNIV, TN
TAYLOR UNIVERSITY - N
TAYLOR UNIVERSITY - UPLAND, IN
TENN WESLEYAN COLLEGE, TN
TOCCOA FALLS COLLEGE, GA
TRINITY CHRISTIAN COLLEGE, IL
UNIV OF HOUSTON - TX
UNIV OF MAINE AT FORT KENT, ME
UNIVERSITY OF SC - UPSTATE, SC
UNIVERSITY OF THE OZARKS, AR
VICTORY UNIVERSITY, TN
WARNER PACIFIC COLLEGE, OR
WESLEYAN COLLEGE, GA
WILEY COLLEGE, TX
WINSTON-SALEM STATE UNIV, NC



NEWBERRY
COLLEGE